



cool stays

A SELECTION OF COTTAGES, FARMHOUSE AND
COW PADS SET IN PICTURE PERFECT
COUNTRYSIDE WITH SEA VIEWS

ACCOMMODATION AT THE COW SHED CRAIL

Make the most of your wedding at The Cow Shed Crail and have up to 50 guests stay in our accommodation which is all within walking distance of the venue (majority of it within 100m of the venue). Spend the weekend enjoying coastal walks, the pretty harbour village of Crail, pre wedding get togethers and enjoying the all important wedding debrief over a bacon roll. All of our properties are set in beautiful countryside with far reaching views over the sea and within walking distance to Crail.

In Crail you can enjoy the harbour, fantastic shops such as Crail Pottery, Penman's the butcher, Crail Fish and Chips, the Harbour Gallery Tea Room and The Shoregate pub and restaurant.



GATHER - CELEBRATE - STAY

SYPSIES FARMHOUSE

A fantastic farmhouse with modern open plan kitchen living area, sea views and a stone's throw from The Cow Shed Crail.

Downstairs:

Large utility room/bootroom

Large open plan living kitchen area with glass sliding doors to patio/enclosed garden Larder with freezer

Double bedroom

Shower room with toilet and washbasin

Reception room

2nd Reception room with large corner sofa/double sofa bed

Garden table with seating

Upstairs:

Master bedroom with ensuite shower room

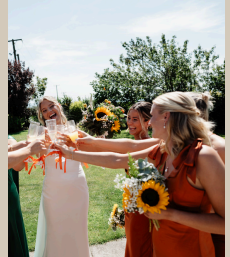
2 further double bedrooms

2 twin bedrooms

Bathroom with shower and bath

One further bathroom with shower

Sleeps up to 14. min 2 night stay



PROPERTY DETAILS



Pricing

APRIL - SEPTEMBER TWO NIGHT STAY - £3750

OCTOBER - MARCH TWO NIGHT STAY - £3000

EXTRA NIGHT - £250

Sypsie's Farmhouse Amenities

- Wifi
- Microwave
- Toaster
- Induction hob
- Double oven
- Freezer in larder (accessed off the kitchen, left door before the bathroom)
- Bluetooth radio/speaker in open plan living room
- TV in open plan living room
- Iron and Ironing board
- Hairdryers (x3)
- Washing machine
- Fire - firewood provided under the overhang by the blue door Trampoline
- Swing
- Enclosed garden area where dogs are allowed but please clean up after them.
- Towels and bed linen provided.
- Sofa bed linen
- High chair Travel cot (no linen provided)
- Dishwasher tables, washing up liquid and loo rolls to start your stay all provided
- Small hand soaps and shower gels provided.

DOGS

We are happy for one or two well behaved dogs in the property. They are not to be allowed upstairs or on the furniture. Please ensure you tidy up after your dogs in the garden.

BOOKING - Email thecowshedcrail@gmail.com

PROPERTY FLOORPLAN

The Main Farm House,
The Cowshed,
Sypsys Farmhouse,
Craik,
Anstruther, KY10 3XA



Approx. Gross Internal Area
2799 Sq Ft - 302.80 Sq M
(including Out Building & Wood Shed)
For identification only. Not to scale.
© SquameFloor 2023



THE COW PADS

We are huge fans of our converted shipping containers, known as our 'Cow Pads' . We have two located right next to the farmhouse and The Cow Shed Crail, Cow Pad Gertie and Cow Pad Daisy.

Each Cow Pad can sleep two guests and they can be booked for one night stays. Book online at www.eastcoastcabinco.co.uk

The Cow Pads come with the following:

- Double bed
- En-suite shower room with washbasin and toilet
- Parking for one car
- Decking area
- Outside bath
- Festoon lights
- Laura Thomas bubble bath
- Table and chairs
- Small Kitchenette with toaster and small fridge
- Dogs are NOT allowed in our Cow Pads
- Each Cow Pad is £175 per night

Each sleeps 2, min 1 night stay



COW SHED COTTAGES

We have a total of seven country cottages in total that can be rented, however we split these in to two groups based on their location. The first group is known as 'The Cow Shed' cottages as they are located less than 100m from the venue.

The cottages come with parking, fantastic enclosed gardens and are a walking distance to the village of Crail. All have lovely views of the countryside with sea views in the distance.

The four cottages are as follows:

MEGGIE ALLANS - SLEEPS 4

CRADLE COTTAGE - SLEEPS 4

SYPSIES COTTAGE - SLEEPS 4

MICKS COTTAGE - SLEEPS 8

Sleep 20 in 4 cottages, min 2 night stay



COW SHED COTTAGE FLOORPLANS

Mick's Cottage

Mick's Cottage,
The Cowshed,
Sypsies Farmhouse,
Crail,
Anstruther, KY10 3XA

 SquareFoot

Approx. Gross Internal Area
1060 Sq Ft - 103.07 Sq M
For identification only. Not to scale.
© SquareFoot 2023

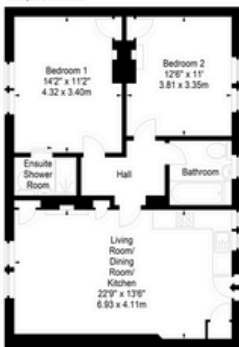


Cradle Cottage

Cradle Cottage,
The Cowshed,
Sypsies Farmhouse,
Crail,
Anstruther, KY10 3XA

 SquareFoot

Approx. Gross Internal Area
760 Sq Ft - 70.60 Sq M
For identification only. Not to scale.
© SquareFoot 2023



Sypsies Cottage

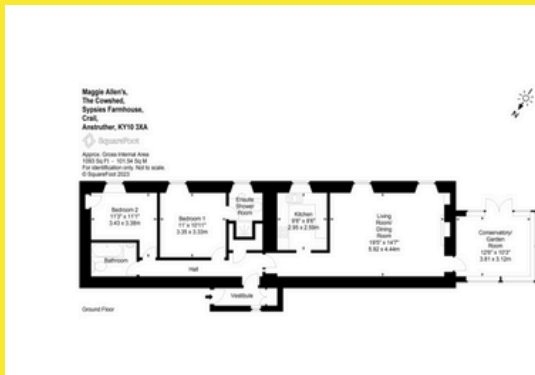
Sypsies Cottage,
The Cowshed,
Sypsies Farmhouse,
Crail,
Anstruther, KY10 3XA

 SquareFoot

Approx. Gross Internal Area
755 Sq Ft - 70.14 Sq M
For identification only. Not to scale.
© SquareFoot 2023



Meggie Allan's Cottage



Cow Shed Cottages Amenities

- Wifi
- Microwave
- Toaster
- Hob
- Double oven
- Fridge and Freezer
- Cafetierre
- Bluetooth radio/speaker
- TV
- Iron and Ironing board
- Hairdryer
- Washing machine
- Shared swing/play areas.
- Enclosed garden area where dogs are allowed but please clean up after them.
- Towels and bed linen provided.
- Dishwasher tables, washing up liquid and loo rolls to start your stay all provided
- Small hand soaps and shower gels provided.

DOGS

We are happy for one or two well behaved dogs in the property. They are not allowed on the furniture. Please ensure you tidy up after your dogs in the garden.

BOOKING - To book all as a package please email thecowshedcrail@gmail.com, If you would like to book individual cottages you can do this by visiting www.propertystandrews.co.uk which is the website of Kingask St Andrews who manage the cottages.

Pricing for all Cow Shed package cottages

APRIL - SEPTEMBER TWO NIGHT STAY - £4330

OCTOBER - MARCH TWO NIGHT STAY - £3464

EXTRA NIGHT - £50 per cottage

Individual cottages can be booked instead of full package.

KIRKMAY COTTAGES

The three other cottages are known as our 'Kirkmay Cottages', these cottages are still located within the grounds of the farm and are located on the other side of the field from the farmhouse as you look towards the sea. Approx a 10 minute walk or 2 minute drive on farmtrack roads.

The cottages come with parking, fantastic enclosed gardens and are walking distance to the village of Crail. All have lovely views of the countryside with incredible sea views.

The four cottages are as follows:

KIRKMAY 4 - SLEEPS 6

THE NUTTINGS - SLEEPS 4

MAY ISLE - SLEEPS 2

Sleep 12 in 3 cottages. min 2 night stay



KIRKMAY COTTAGE FLOORPLANS

Awaiting
floorplans

Pricing for all Kirkmay cottages

APRIL - SEPTEMBER TWO NIGHT STAY - £2210

OCTOBER - MARCH TWO NIGHT STAY - £1768

EXTRA NIGHT - £50 per cottage

Individual cottages can be booked instead of full package

Kirkmay Cottages Amenities

- Wifi
- Microwave
- Toaster
- Hob
- Double oven
- Fridge and Freezer
- Cafetierre
- Bluetooth radio/speaker
- TV
- Iron and Ironing board
- Hairdryer
- Washing machine
- Shared swing/play areas.
- Enclosed garden area where dogs are allowed but please clean up after them.
- Towels and bed linen provided.
- Dishwasher tables, washing up liquid and loo rolls to start your stay all provided
- Small hand soaps and shower gels provided.

DOGS

We are happy for one or two well behaved dogs in the property. They are not allowed on the furniture. Please ensure you tidy up after your dogs in the garden.

BOOKING - To book all as a package please email thecowshedcraill@gmail.com, If you would like to book individual cottages you can do this by visiting www.propertystandrews.co.uk which is the website of Kingask St Andrews who manage the cottages.

POSTCARDS FROM CRAIL AND SURROUNDS

